

CERTIFIED LAND CORNER RECORDATION

DESCRIPTION OF CORNER EVIDENCE FOUND, AND ORIGINAL RECORD (If known)

LOCATION

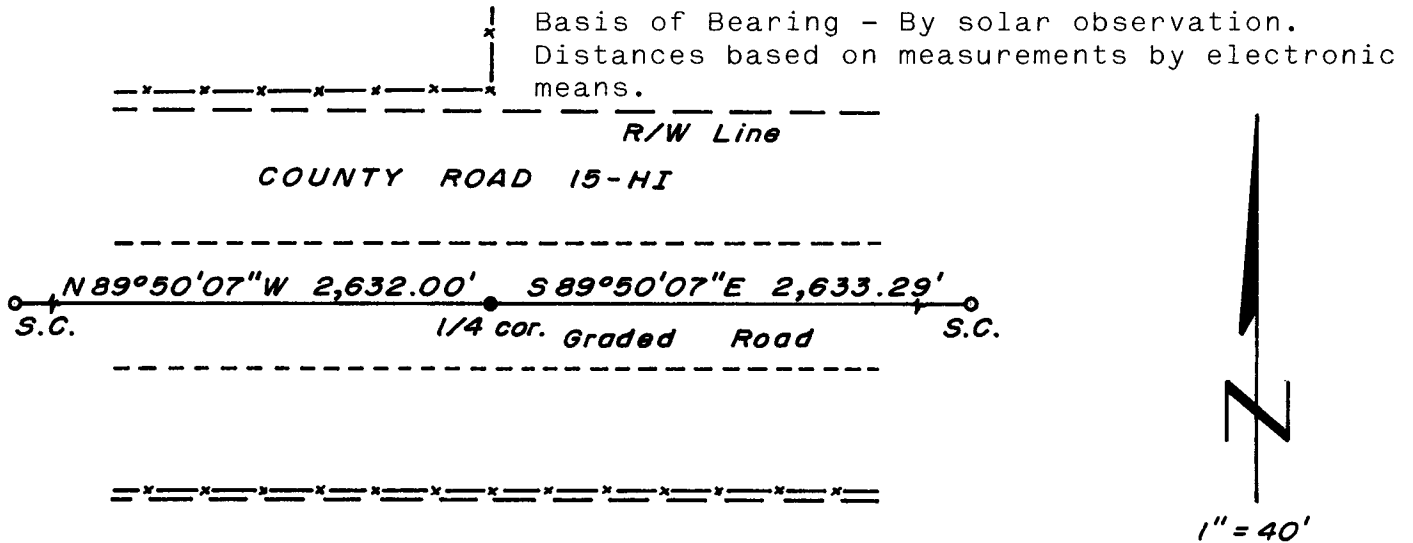
1/4 S.32
S. 5
T.15N.,R.63W.
T.14N.,R.63W.
6th P.M.

No evidence of corner monument (stone) found. Corner position re-established on a straight line between re-established section corners east and west on call distance from west section corner per Union Pacific Railroad plans. Re-established position verified by fence line evidence.

DESCRIPTION OF MONUMENT AND ACCESSORIES ESTABLISHED TO PERPETUATE THE ORIGINAL LOCATION OF THIS CORNER:

At the corner: Set a 5/8" dia. x 24" long rebar with 2" dia. aluminum cap, 6" below surface of graded road.
Accessories: None

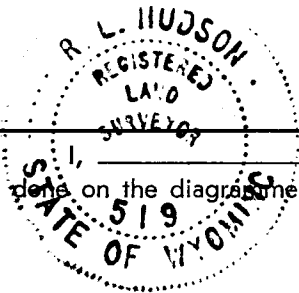
SKETCH, WITH COURSE AND DISTANCE TO ADJACENT CORNER IF DETERMINED IN THIS SURVEY.
(May Sketch or Paste Reproduction on Reverse Side.)



Aluminum cap stamped:

T.15N. R.63W.
1/4 S.32
S. 5
T.14N.

LS 519 1978



I, R.L. Hudson certify that I have carefully performed ~~or reviewed~~ the work done on the diagrammed corner as reported on this recordation form and approve the same.

R.L. Hudson Wyoming L.S. No. 519
Signature of Surveyor Registration No.

STATE OF WYOMING,
Office of Clerk and Recorder,
County of Taramie

This "corner record" was filed for record on the 19 day of June, 1978, was noted on the cross-index plat and is assigned page No. _____, in book No. _____.

Yvonne C. Whitehead
County Official

Cross Index No.	T.	R.	Mer.
<u>A 1</u>	<u>15</u>	<u>63</u>	Mer.
<u>27</u>	<u>15</u>	<u>63</u>	Mer.
_____	_____	_____	Mer.
_____	_____	_____	Mer.
_____	_____	_____	Mer.
_____	_____	_____	Mer.

487883
487883

Photographie: _____
Indexed 201 _____
Posted 1 _____
Assessor _____